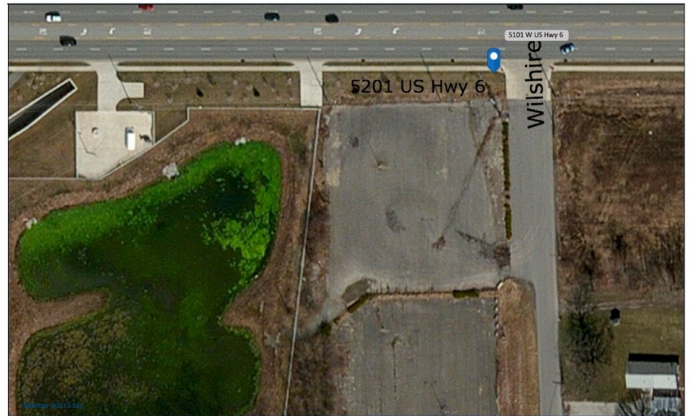


Office-Retail Out Lot

5201 US HWY 6, Portage, IN 46368



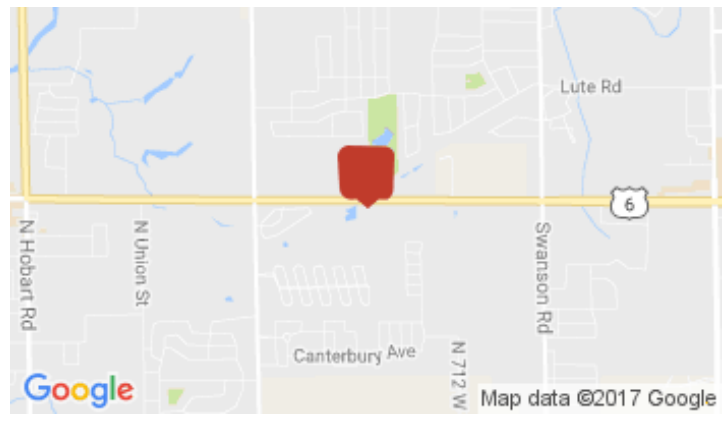
Listing ID:	30051375
Status:	Active
Property Type:	Vacant Land For Sale
Possible Uses:	Office, Retail
Gross Land Area:	90,000 SF
Sale Price:	\$265,000
Unit Price:	\$2.94 PSF
Sale Terms:	Cash to Seller
Nearest MSA:	Chicago-Joliet-Naperville
County:	Porter
Tax ID/APN:	64-05-27-126-005.000-016
Zoning:	COMMERCIAL
Property Visibility:	Excellent
Highway Access:	Sits on US Hwy 6



October 23, 2015

Overview/Comments

+/- 2 acre Office/Retail out lot sitting half a mile West of Willowcreek. At the entrance to Neighbor's Education Opportunities (NEO) school complex and the corner of Wilshire Drive. High profile site on a busy US 6 corridor. All utilities are available.



More Information Online

<http://www.icrex.net/listing/30051375>

QR Code

Scan this image with your mobile device:



Property Contacts

Belinda Schuster, CCIM

NWI Commercial Real Estate
219-309-9450 [M]
219-246-2336 [O]
Belinda@nwicre.com